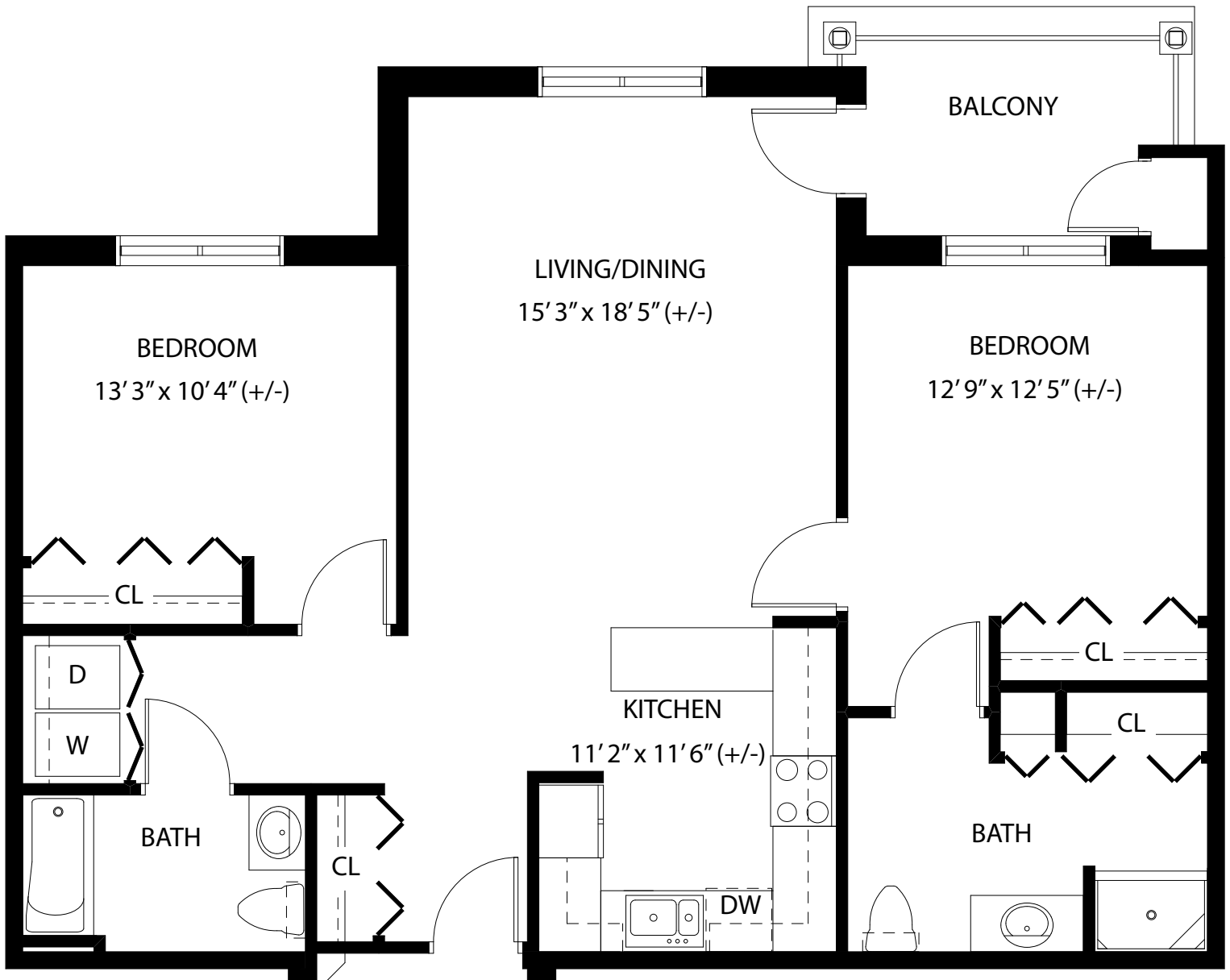




Retirement  
Community

## GOLDEN ROD



**TWO BEDROOM - 1165 sq. ft.**

**Some units may vary in layout. All dimensions are approximate.**

# Golden Rod Two Bedroom Apartment Features

- Spacious apartment homes complete with wall-to-wall carpeting and large closets
- Mini-blind window treatments for privacy
- Individually controlled heating and air conditioning
- Fully equipped kitchens with stove, microwave, refrigerator, dishwasher and garbage disposal
- High quality appliances, counter tops, cabinetry and building materials
- Washer and dryer in each apartment home
- Two bathrooms — one with walk-in shower and one with bath tub/shower
- Pre-wired for telephone and cable television
- Some apartment homes have fireplaces
- Smoke detectors, fire alarms and sprinkler systems
- Fire and sound resistant
- 24-hour emergency pendant
- Additional enclosed storage
- Centrally located elevators
- Ample parking for residents and guests
- Carports available

## Resident Service Package

- 20 meals per month in the Trellis Dining Room
- All utilities included except for telephone and cable television
- Bi-Weekly housekeeping service with flat linens
- Maintenance of apartment home and grounds
- Full-time Life Enrichment Director to coordinate social and recreational activities
- Scheduled transportation
- Priority access to Assisted Living apartments

## Community Areas

- The Trellis Dining Room
- The Courtyard Café
- Private Dining Room
- Garden Room with HD Television
- Arts/Crafts Room
- Beauty/Barber Shop
- Gift Shop
- Game Room - Billiards
- Woodworking Shop
- Library/Lounge with fireplace
- Maples room for cultural, educational and recreational programs
- Landscape grounds with walking paths
- Horse Shoe Pits
- Garden Area
- Picnic Area

## Health Services

- Exercise Room
- Membership to Chelsea Community Hospital Health & Wellness Center