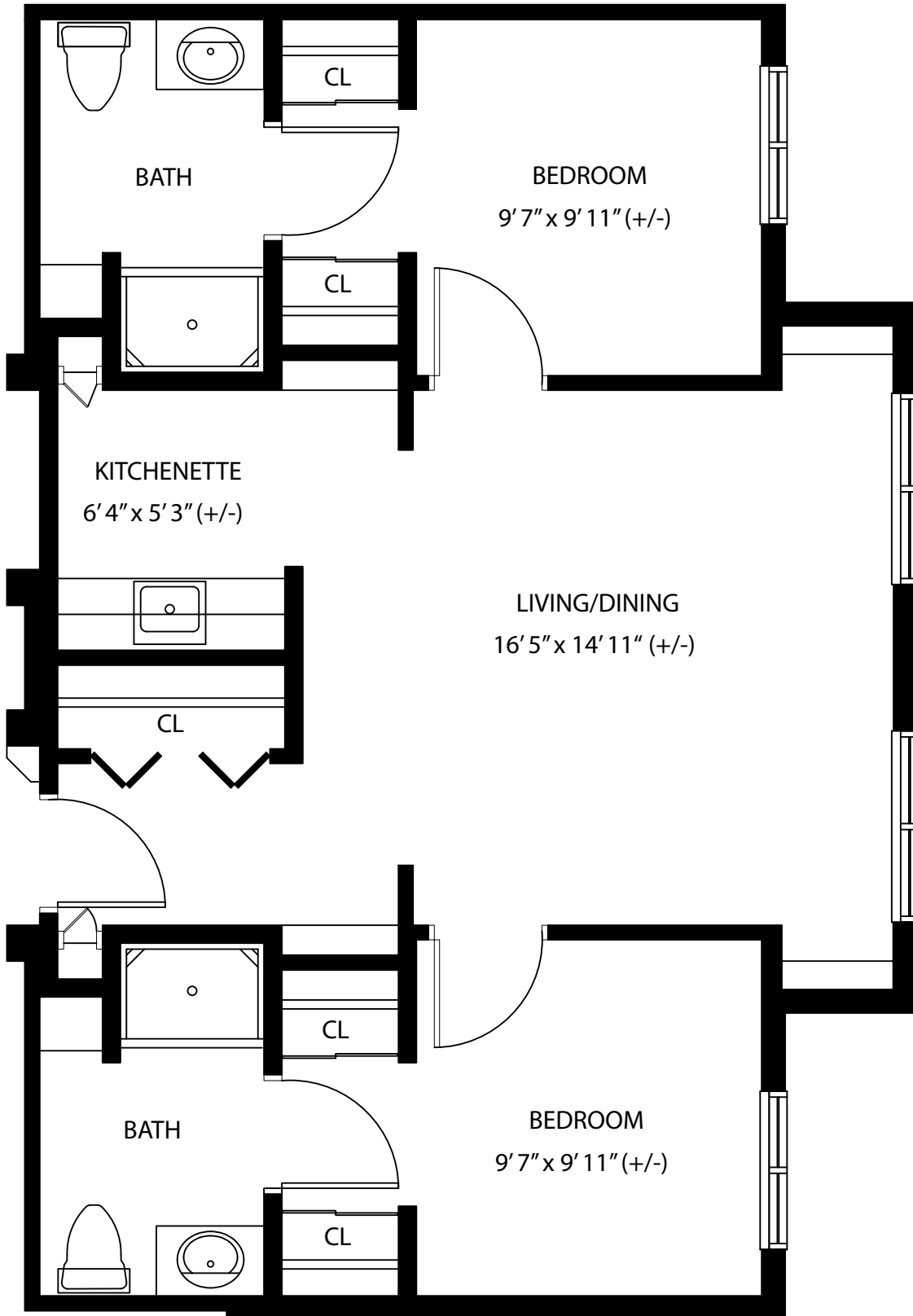




# TUPELO



**TWO BEDROOM - 812 sq. ft.**

**Some units may vary in layout. All dimensions are approximate.**

# Tupelo Two Bedroom Apartment Features

- Private apartment homes complete with wall-to-wall carpeting and large closets
- Mini-blind window treatments for privacy
- Individually controlled heating and air conditioning
- Kitchenette including microwave, refrigerator, and sink
- High quality counter tops, cabinetry and building materials
- Two private baths with walk-in shower (some units)
- Pre-wired for telephone and cable television
- 24-hour emergency pendant
- Smoke Detectors, fire alarms and sprinkler system
- Fire and sound resistant
- Centrally located elevators
- Ample parking for residents and guests
- Carports available

## Resident Service Package

- Three nutritious meals every day served in The Arbor Room
- Four levels of assistance with activities of daily living – 24-hour staffing
- All utilities included except for telephone and cable television
- Weekly housekeeping
- Weekly laundry
- Daily bed making
- Maintenance of apartment home and grounds
- Full-time Life Enrichment Director to coordinate social and recreational activities
- Scheduled transportation

## Community Areas

- The Arbor Dining Room
- The Courtyard Cafe
- Private Dining Room
- Great Room with HD Television
- Arts/Crafts Room
- Beauty/Barber Shop
- Gift Shop
- Game Room - Billiards
- Woodworking Shop
- Library/Lounge
- Maples room for cultural, educational and recreational programs
- Landscaped grounds with walking paths
- Horse Shoe Pits
- Garden Area
- Picnic Area

## Health Services

- Exercise Room
- Membership to Chelsea Community Hospital Health & Wellness Center